

Environmental Considerations

Alternate 5: Winston/Homeland

FEMA Floodplain/NWI Wetland Locations



Strategic Habitat Conservation Areas/Recreation Lands



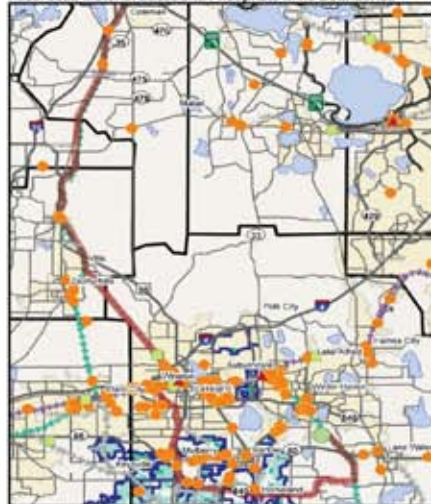
Environmental Data

- FEMA Floodplain/NWI Wetlands**
 - Special Flood Hazard Area
 - Wetlands
- Public Facilities/Historic Structures**
 - Police Station
 - Fire Station
 - Hospital
 - School
 - Religious Institution
 - Government Building
 - Culture Center
 - Civic Center
 - Correctional Facility
 - NRHP Listed Resource
 - NRHP Listed District
- Strategic Habitat Conservation Areas/Recreation Lands**
 - Strategic Habitat Conservation Area
 - Conservation Land
 - National Wildlife Refuge
 - State Forest
 - State Park
 - Park/Playground
- Hazardous Material Locations**
 - TRI Site
 - CERCLIS Site
 - Brownfield Location
 - Phosphate Mine Reclamation Status
 - Phosphate Mine Boundary
 - Not Released
 - Partially Released
 - Released

Public Facilities/Historic Resources



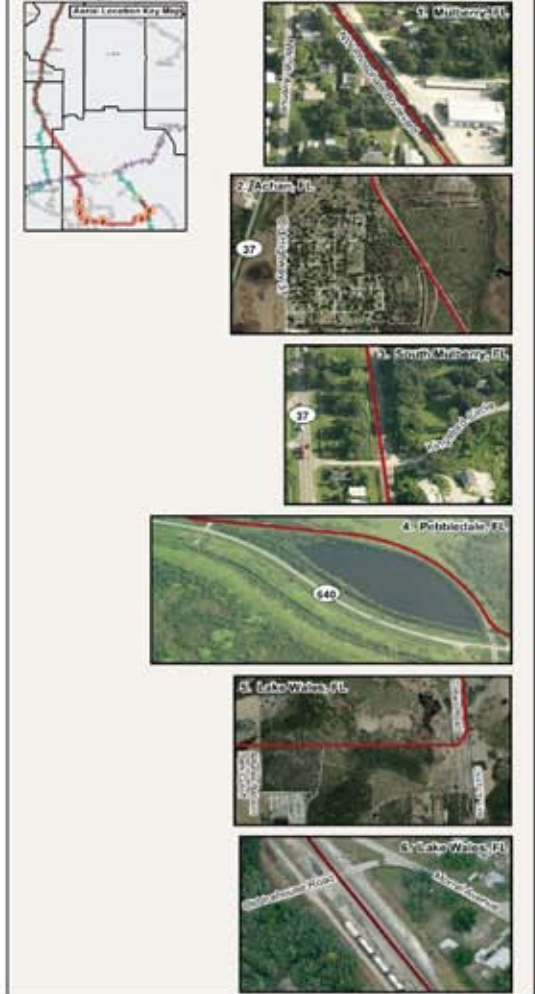
Hazardous Material Locations/Phosphate Mine Boundaries



Segment Type

- Winston/Homeland Alternative
- Area Features**
 - CSXT "A" Line
 - CSXT "S" Line
 - Area Rail Line
 - Inactive Rail
 - Proposed Winter Haven Integrated Logistics Center
 - Area Roadway
 - Water
 - Urban Boundary
 - County Boundary

Aerial Images



Source: Bureau of Transportation Statistics National Transportation Model Database; USFWS Branch of Habitat Assessment; FEMA; USFWS; FDOT; FDOT; FDOT; Google Earth; Microsoft; USGS; ESRI Data